

GREEN MAN PARK



Walnut Hills, Cincinnati's "Second Downtown"

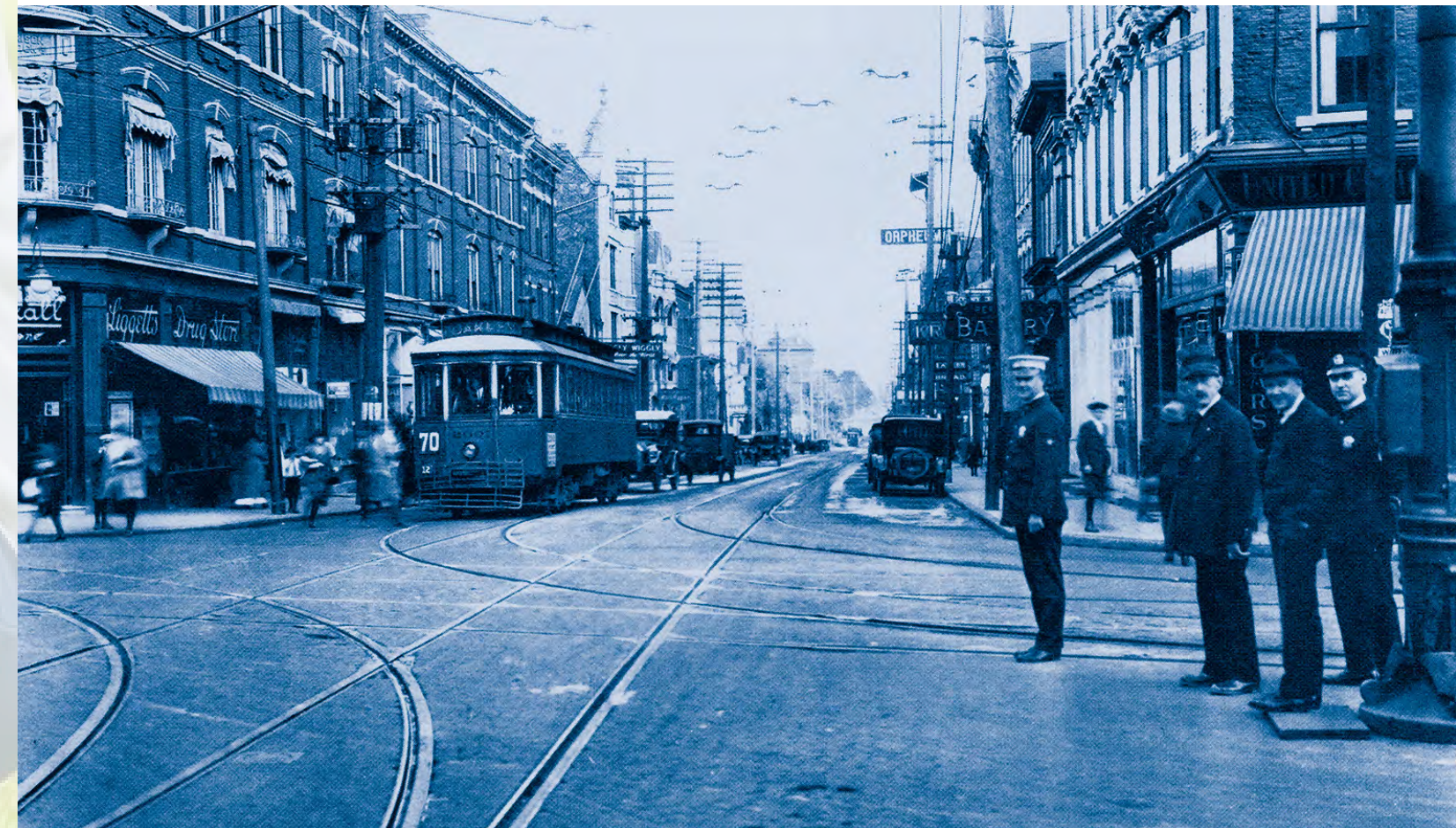
By the end of the 19th century, Walnut Hills had six streetcar lines: the Cross-Town, the Vine-Norwood, the Zoo-Eden, the Norwood-Gilbert Avenue, the Gilbert Avenue, and the Madison Road – all intersecting at McMillan and Gilbert. Known as Peebles Corner, it was a regional shopping center, the busiest one in the metropolitan area outside of downtown

Cincinnati and referred to in the 1925 Cincinnati Master Plan as “one of the most important intersections in the city.”

And a few hundred yards to the west, overlooking all this bustling commercial activity, was a beautifully-carved Green Man sculpture perched on the northwest corner of Chatham and East McMillan.

A vibrant greenspace where everyone feels welcome.

Green Man Park will be an actively-programmed park where residents, store owners, and their customers can all gather and interact. It's an integral part of the overall Peebles Corner Business District and the upcoming Firehouse Row development.



Peebles Corner in 1926, the crossroads of the Walnut Hills Business District, looking west on East McMillan.

The History of the Walnut Hills Green Man



David Hummel
1822-1894

David Hummel, a German Stonecutter, carved the Green Man as well as other works that adorn the Eden Park Reservoir, City Hall, Union Terminal, and the Cincinnati Gas and Electric Building.

This nearly seven-foot tall, hand-carved limestone face cast his gaze upon the Peebles Corner business district from 1890 until his building was demolished in 1991. Now, after

25 years in storage, the sculpture has been reunited with the space where he once stood as the centerpiece of a new public park.

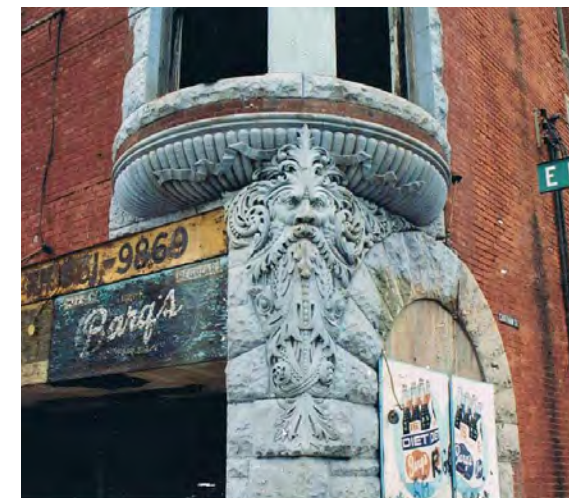
The Green Man icon has its roots in ancient Babylonian, Egyptian, Greek, Roman, Norse, and Celtic cultures from as early as four thousand years ago. It represents the triumph of Life over Death; its symbolism of rebirth is expressed by the emergence of spring after a long winter.

More recently, it has become an icon for the green movement and a powerful inspiration for humankind to reconnect with nature by recognizing that we're all part of the earth. As a symbol of revitalization, the Green Man aligns thematically with the positive strides being made here in the redevelopment of the Walnut Hills neighborhood.



Green Man's original site at E McMillan and Chatham on the corner of an apartment building. Sanborn Insurance Maps, Volume 4, Page 317, 1904 - 1930.

Preserving and Restoring a Walnut Hills Treasure



Green Man, in his original location, sadly painted blue.



John Scharlock disassembling the sculpture in 1991.



Twenty-five years later, the man who rescued the Green Man from the wrecking ball, John Scharlock (r), and the man who put him back in his rightful place, Fred Orth (l), look on as the carving is being reassembled.

A Neighborhood Park, Built by Neighborhood People

This unique space has largely been built by volunteers. Corporate groups, non-profits, and church groups stepped up to lend a hand in turning the Park from a dream into a reality.

In the end, over 1,100 hours of volunteer time have been donated by friends and neighbors to build a park that the entire community can share and enjoy.



Community supporters, **Chris and Sheila DeSimio**, laying pavers for the pervious sidewalk.



The hard-working crew from **Toyota | Cincinnati Region** building the dog-walking trail.



Walnut Hills residents, **Matt and Jena Bradley**, sifting gravel to grout the pavers.



Taking Root, with funding and volunteer support from **US Bank**, planting eight trees as part of an on-going effort to reforest Cincinnati's devastated tree canopy.



A **Crossroads Church** volunteer on GO Cincinnati Day rototilling a perennial bed for planting native pollinators.



UC Serves prepping what would become the site of the Green Man carving structure.

An Environmentally-Friendly Urban Park

The Green Man symbolizes sustainability, rebirth, and revitalization. These themes are reinforced throughout the design and implementation of the Park.

We take our commitment to environmental stewardship seriously. The circular sidewalk is made of concrete and reclaimed pavers laid upon a pervious substrate. It is bookended by decommissioned

granite curbs that serve as benches at the two main entryways.

The Park features a perennial-flower rain garden that collects precipitation to prevent it from running into the storm sewers.

Native plantings along the main automotive and pedestrian corridors support the local fauna – bees, butterflies, and birds – with which they’ve co-evolved.



Native pollinator garden designed and installed by Dave Gamstetter’s UC Horticulture students.

Colorful plantings with four-season interest enclose the dog-walking trail and act as a buffer to the adjoining family residences.

The grounds were created and will be maintained using environmentally-friendly principles.



The Park is being built and will be maintained using methods that are in tune with nature and promote environmental sustainability.

Our Green Man Park Partners

The Park has been a collaboration between the City, the Walnut Hills community, and organizations that saw value in what was being done. The City's Department of Transportation and Engineering provided the design and built the hardscape infrastructure;

Urban Forestry contributed trees. From there it has been the neighborhood's responsibility to finish the Park.

The Park is very fortunate to have been supported by so many talented volunteers and these generous organizations:



Budget

PARK-BUILDING EXPENSES

Construction Expenses

Building Materials	\$ 900
Electric.....	3,950
Equipment Rental.....	2,550
Landscaping (plants and materials)	6,700
Masonry.....	27,600
Plumbing.....	5,050

Construction Sub-Total \$ 46,750

Infrastructure Expenses

Bike Rack	\$ 1,750
Lighting	1,050
Recycling and Trash Cans	375
Seating.....	2,200
Signage	750
Water Fountain.....	3,750

Infrastructure Sub-Total \$ 9,875

Park-Building Expenses Total \$ 56,625

DONATIONS

Cash Donations	\$ 5,000
Grants	24,610

Donations Total \$ 29,610

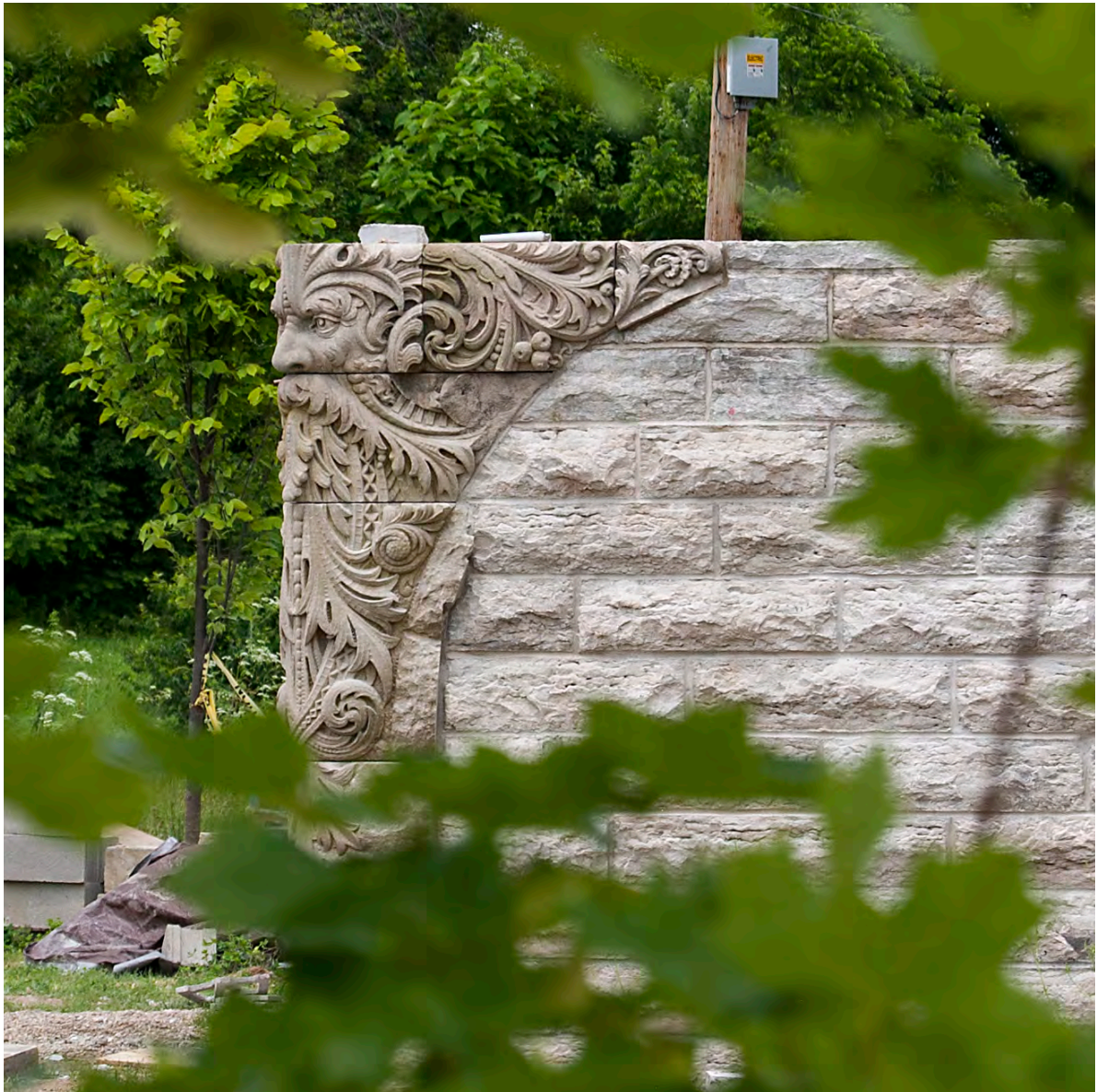
Net Funds Needed to Complete \$ 27,015

ANNUAL OPERATION EXPENSES

Maintenance.....	\$ 5,750
Programming.....	4,000
Utilities.....	1,400

Annual Expenses Total \$ 11,150

Total Park-Building Cost (including In-Kind Donations and Grants) \$ 223,902



LOCATION
760 E McMillan
Walnut Hills, OH 45206

ONLINE PHOTO GALLERY
www.facebook.com/GreenManPark/

TO DONATE
goo.gl/jAizFC

FACEBOOK
goo.gl/cBwkYU

FOR MORE INFORMATION
Fred Orth, Project Leader
fredorth@fuse.net

Gary Dangel, Greenscape
gary.dangel@gmail.com